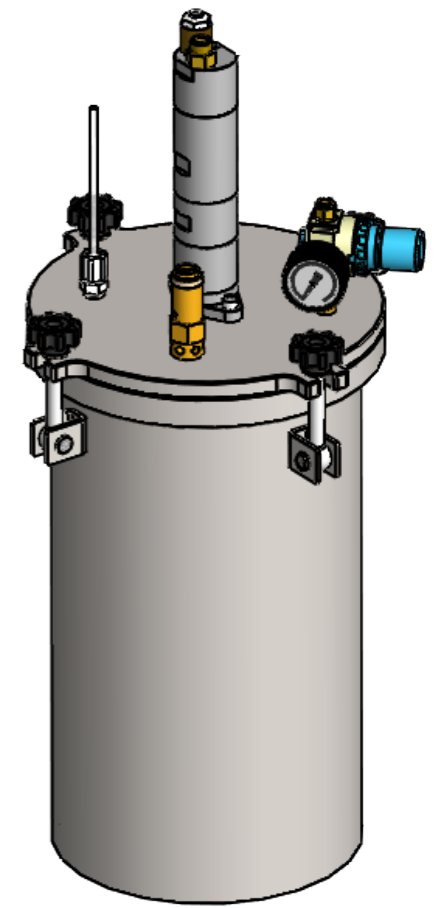
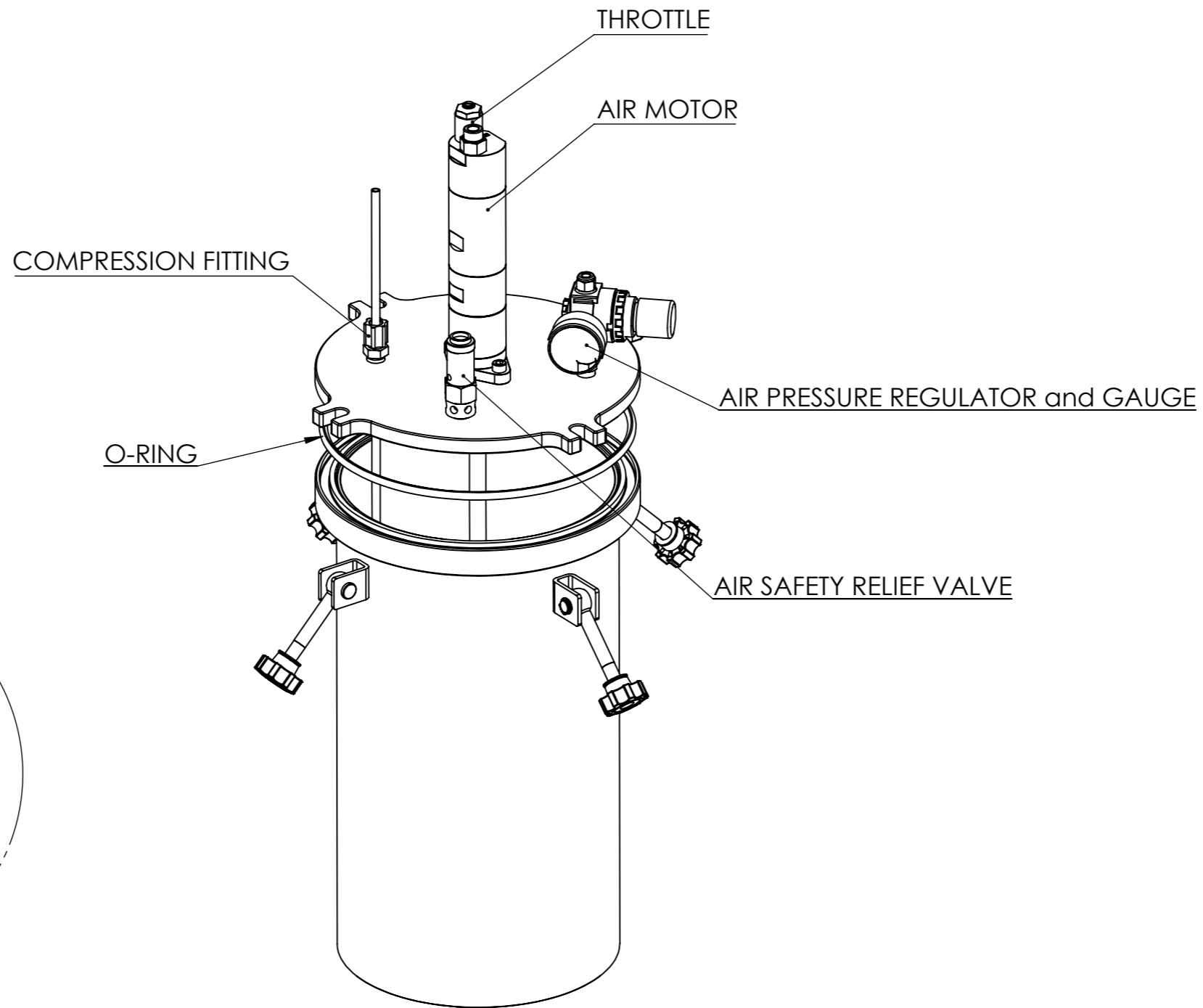


NOTE :

1. DIMENSIONS ARE IN mm
2. MATERIALS :
 tank and cover and dip tube : stainless steel 303/304 (316 OPTION)
 output fittings : polypropylene
 oring : Viton
3. MAXIMUM PRESSURE : 100 PSI (6.9 bar)
4. CAPACITY WITHOUT LINER : 10 LITRE
5. INSIDE DIMENSIONS : Ø 200mm x 361mm DEEP
6. DRY WEIGHT :
7. DIMENSIONS ARE FOR REFERENCE ONLY
8. ALSO SUPPLIED :



REVISION	INITIALS	DATE	MODIFICATIONS
A	NR	27.01.17	INITIAL ISSUE
B	NR	28.11.18	DIP TUBE REMOVED DIP TUBE IS NOW A SEPARATE VERSION
C	NR	23.04.20	UPDATE OF VARIOUS ELEMENTS

This document must not be copied without our written permission, and the contents thereof must not be imparted to a third party nor be used for any unauthorised purpose. Contravention will be prosecuted.		GENERAL TOLERANCE Unless otherwise stated Linear: 0.0 +/- 0.25 Angular: 0.0 +/- 1° Surface Roughness: Ra1.6						
<table border="1"> <thead> <tr> <th>NAME</th> <th>DATE</th> </tr> </thead> <tbody> <tr> <td>DRAWN NICOLAS REYNIER</td> <td>27.01.2017</td> </tr> <tr> <td>APPV'D SIMON KAYE</td> <td></td> </tr> </tbody> </table>		NAME	DATE	DRAWN NICOLAS REYNIER	27.01.2017	APPV'D SIMON KAYE		ISO STANDARD FOR Thread class external 6g internal 6H Geometric Tolerances
NAME	DATE							
DRAWN NICOLAS REYNIER	27.01.2017							
APPV'D SIMON KAYE								

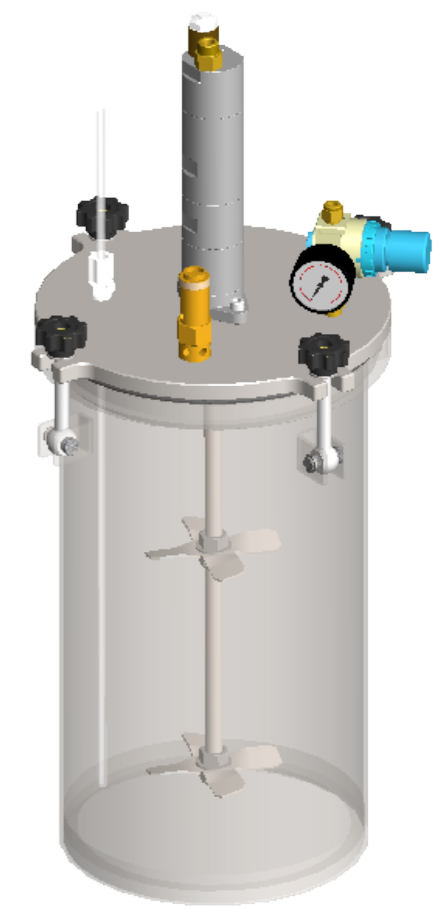
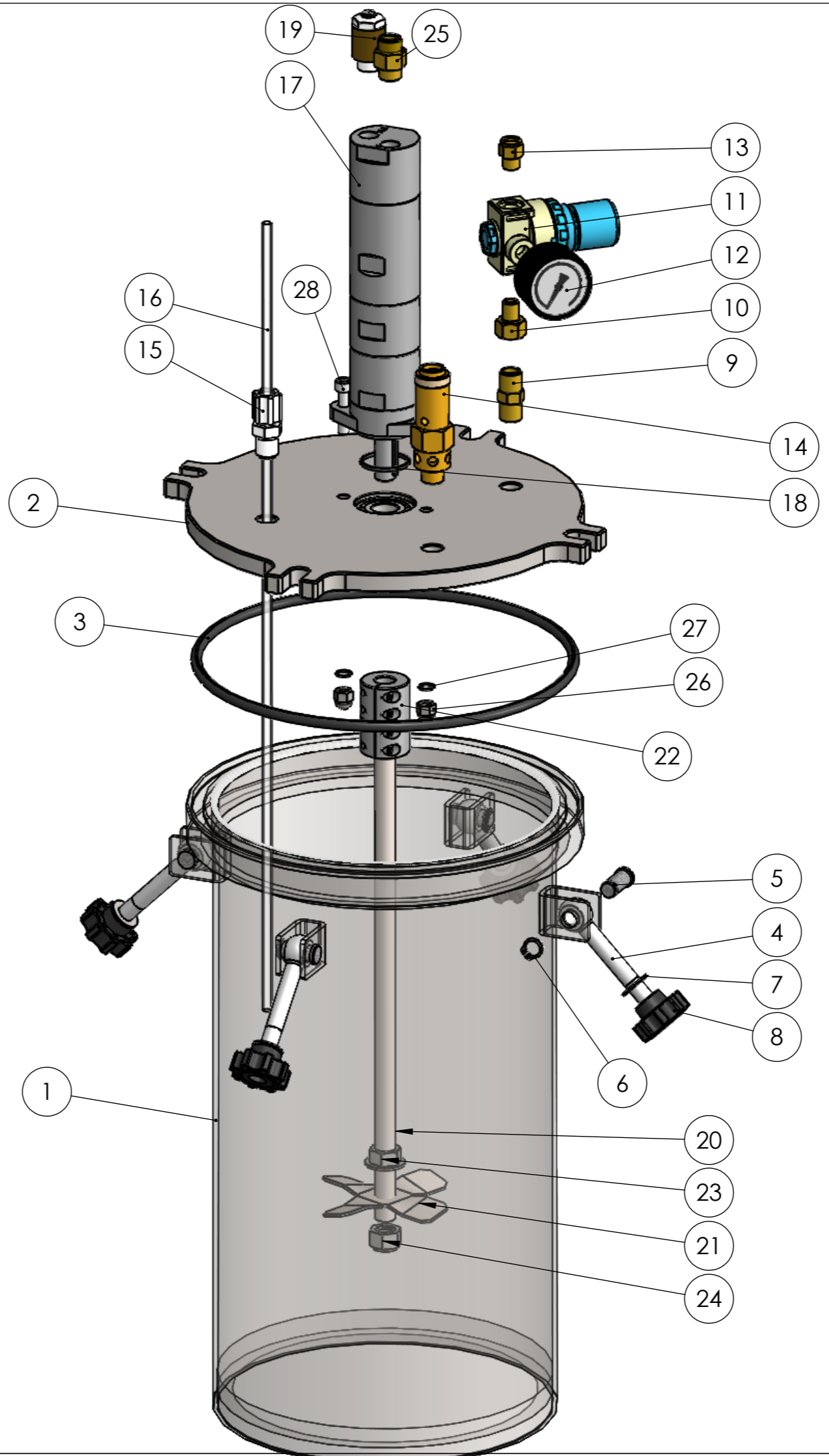
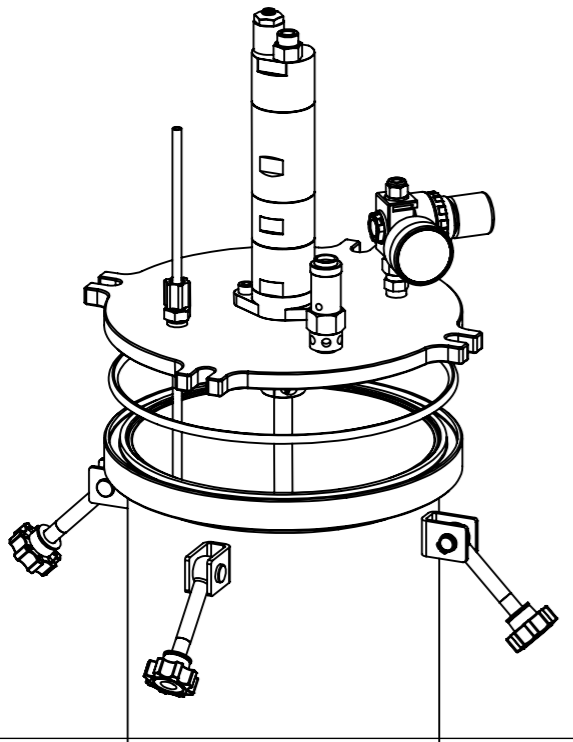
SR-TEK	MATERIAL: STAINLESS STEEL
	FINISH: BRUSHED

BREAK SHARP EDGES WITH CHAMFER 0.3x45°	DO NOT SCALE DRAWING
WEIGHT: g	

TITLE:
10L RESERVOIR ASSY WITH AIR MOTOR

DWG NO.	1000CL-STAG Revision C	A3
---------	----------------------------------	----

#	PART NUMBER	DESCRIPTION	QTY
1	1111B	10L RESERVOIR BODY	1
2	1110L-AG	10L RESERVOIR LID	1
3	OR-6-219	O-RING 2019mm ID x 6mm	1
4	BM10x75SSSWING	SWING BOLT M10	4
5	1015	DOWEL PIN	4
6	HCIRCLIPEXT10	CIRCLIP EXTERNAL D10	4
7	WM10-19SS	WASHER M10	4
8	NM10PLSTAR	EIGHT LOBED KNOB M10 PLASTIC BRASS	4
9	HNIPPLE0.25	NIPPLE NPT 1/4"	1
10	HADAPTERF.25-M.125	1/8 MALE 1/4 FEMALE BSP NIPPLE ADAPTER	1
11	HREGULATORAIR100	PRESSURE REGULATOR 0-100 PSI	1
12	AN-100-G	PRESSURE GAUGE 0-100PSI	1
13	HADAPTER0.125-6	STRAIGHT ADAPTOR G1/8 x 6mm	1
14	100-SV	SAFETY VALVE 0.25 100 PSI	1
15	FIT-0.25-COMP-6	COMPRESSION ADAPTER 1/4NPT 6mm	1
16	6PE-CL-10L	FLUID TUBING 6mm CLEAR (not supplied)	1
17	2517-AM	AIR MOTOR 380W	1
18	OR-2-26	O-RING 26mm ID x 2mm	1
19	HAIRTH	THROTTLE FOR AIR MOTOR	1
20	1121	MIXER SHAFT 10L	1
21	1L-9010-DOUBLE	MIXING DOUBLE BLADE	1
22	HCOUPLING1212	SHAFT COUPLER 12 12	1
23	NM12SSFLANGE	FLANGE NUT M12x1.75	1
24	NM12SSLOCK	LOCKING NUT M12x1.75	1
25	HADAPTER0.25-8	STRAIGHT ADAPTOR R1/4 x 8mm	1
26	NM6SSBLIND	CAP NUT M6x1.0	2
27	W6.7SSBONDED	BONDED SEAL 6.7	2
28	BM6x28SSCAP	CAP HEAD BOLT M6x1.0 STAINLESS	2



REVISION	INITIALS	DATE	MODIFICATIONS
A	NR	27.01.17	INITIAL ISSUE
B	NR	28.11.18	DIP TUBE REMOVED DIP TUBE IS NOW A SEPARATE VERSION
C	NR	23.04.20	UPDATE OF VARIOUS ELEMENTS

This document must not be copied without our written permission, and the contents thereof must not be imparted to a third party nor be used for any unauthorised purpose. Contravention will be prosecuted.		GENERAL TOLERANCE Unless otherwise stated Linear: 0.0 +/- 0.25 Angular: 0.0 +/- 1° Surface Roughness: Ra1.6
ISO STANDARD FOR Thread class external 6g internal 6H Geometric Tolerances		
DRAWN	NICOLAS REYNIER	27.01.2017
APP'VD	SIMON KAYE	

SR-TEK MATERIAL: STAINLESS STEEL
 FINISH: BRUSHED

DO NOT SCALE DRAWING

BREAK SHARP EDGES WITH CHAMFER 0.3x45° WEIGHT: g

TITLE:
10L RESERVOIR ASSEMBLY WITH AIR MOTOR

DWG NO. **1000CL-STAG** Revision C A3

SCALE: 1:3 IF IN DOUBT ASK SHEET 2 OF 2