

Please read this manual before operating the equipment

The equipment contained in this box should only be used by trained personnel wearing appropriate personal protective equipment for the fluid contained.

1000ML - 2000ML - 5000ML – 1000CL – 2500CL
ST Series Reservoirs
Operating Manual



**This manual contains
Important Warnings and Instructions**

Read and retain for future reference

SR-TEK

Summary

Safety Warnings	4
Operating Data	8
Rules and Regulations for the use of pressure tanks	8
Functional Description	10
1000ML-ST Exploded View	11
1000ML-ST Specifications	11
1000ML-ST Replacement Parts	12
2000ML-ST Exploded View	13
2000ML-ST Specifications	13
2000ML-ST Replacement Parts	14
5000ML-ST Exploded View	15
5000ML-ST Specifications	15
5000ML-ST Replacement Parts	16
1000CL-ST Exploded View	17
1000CL-ST Specifications	17
1000CL-ST Replacement Parts	18
2500CL-ST Exploded View	19
2500CL-ST Specifications	19
2500CL-ST Replacement Parts	20
Conditions of use	21
Instructions	22
Setup	23
Pressure Relief Procedure	24
Refilling	24
Wetted Parts List	24
Maintenance and Cleaning	26
Drawings	28
Warranty	33
.....	

The ST Series Reservoirs fall in the Pressure Equipment Directive 2014/68/EU Article 4, Clause 3 – Sound Engineering Practice and has been certified safe to use by SR-TEK.

Safety Warnings

Halogenated Hydrocarbon Fluid Hazard

NEVER USE halogenated hydrocarbon solvents or fluids containing such solvents in this equipment. Examples of halogenated hydrocarbon solvents are: trichloroethane, methylene chloride, fluids with the prefix “fluoro-“, “chloro-“, “bromo-“ or “iodo-“, etc. These solvents can cause an explosion when used in a pressurised fluid pumping system. The resulting explosion may cause death, serious bodily injury or substantial property damage.

List of fluid recommended

The following is a non-exhaustive list of examples of fluids recommended with our reservoirs.

- Accelerators
- Activators
- Anaerobic
- Conformal coating
- Cyanoacrylate adhesives
- Electrolytes
- Epoxies
- Liquid fluxes
- Low viscosity greases
- Low viscosity silicones
- Inks
- Oils
- Optical dyes
- Lacquers and Optical lacquers
- Paints
- Primers
- Reagents
- Saline solutions
- UV adhesives and UV inks
- Water and Water based fluids
- White glue

For all other fluids, please refer to the manufacturer technical data sheet or contact us for compatibility check.

**If you have any questions,
please contact us for assistance.**

E-mail technical@sr-tek.com


Pressurized Equipment Hazard

High pressure fluid can cause serious injury. This equipment is for professional use only. Observe all warnings.

Read and understand all applicable instruction manuals before placing equipment into service.

Equipment Misuse Hazard

GENERAL SAFETY – Any use of the reservoir and related accessories not consistent with that described in this manual, such as modifying or removing parts, over pressurising, using incompatible fluids and chemicals, or using worn, damaged or incompatible parts can cause them to rupture resulting in serious bodily injury, including fluid splashed in the eyes or on the skin, or fire, explosion or other property damage.

 **NEVER** alter or modify any part of this equipment, as doing so may cause it to malfunction.


CHECK all reservoir components regularly and replace any worn or damaged parts with only SR-TEK supplied or approved parts. **BE SURE** that all connected equipment and accessories are rated to withstand the maximum operating pressure of the reservoir.

Personal Protective Equipment

Wear all protective eyewear, gloves, clothing and respirator as recommended by the manufacturer of the fluid used.

System Pressure

NEVER exceed the maximum reservoir pressure of 6.9 bar gauge (100 psi). The maximum supply pressure to the reservoir regulator must not exceed 10 bar gauge (150psi).

 **BE SURE** that all connected equipment and accessories are rated to withstand the maximum operating pressure of the reservoir.

If an Air filter regulator is not used, be certain your plant air is properly filtered and dry. Oil or particles in the air supply line can cause erratic performance and can contaminate the fluid contained, if not properly filtered.

i Fluid Compatibility

BE SURE that all fluids, including their vapours, contained in the reservoir are compatible with all materials on the wetted materials list on page 25 of this manual. Read the fluid manufacturer's literature, including the MSDS (Material Safety Data Sheet) and observe all warnings before pouring the fluid into the reservoir.

If in doubt, contact SR-TEK for chemical compatibility to ensure safe installation and use of the product

Serious injuries to people and equipment around may result from improper installation, use of the device, wrong operation, non-observance of the safety instructions, inappropriate removal of reservoir components, including lid, inappropriate repair or modifications to the product.

Fill Level

DO NOT over fill the reservoir. The recommended maximum fill level is 15mm below the top edge of the reservoir.

Tipping and Dropping Hazard

BE SURE that the reservoir is placed on a hard, level surface and that all tubing lengths are of sufficient length to allow free motion of all movable components attached to the reservoir.

DO NOT pull on tubing to move the reservoir.

Tipping the reservoir or otherwise supporting it on its side can cause fluid to enter both the pressure regulator and pressure relief valve and interfere with their normal function. **A damaged pressure regulator and/or damaged pressure relief valve may lead to an over-pressure condition within the reservoir.** If the reservoir tips or the pressure regulator and/or pressure relief valve otherwise become blocked, they must be replaced with SR-TEK supplied or approved parts.

Dropping the reservoir from any height can damage the pressure regulator, pressure relief valve, and fittings and/or compromise the integrity of the reservoir body and cover. **A damaged pressure regulator and/or damaged pressure relief valve may lead to an over-pressure condition within the reservoir. A damaged reservoir body and/or cover can be an explosion hazard.** If the reservoir falls from any height, it must be thoroughly inspected for cracks or damages to the pressure regulator and pressure relief valve. If damage to a component is suspected, it must be replaced with SR-TEK supplied or approved parts.

Tubing Safety

Pressurised tubing can be very dangerous. Tubing whose integrity is compromised due to any kind of wear, damage or misuse can develop a leak, spraying the contents of the tank at high pressure. This spray can enter the eyes or cover the skin or cause other serious bodily injury, fire or property damage.

Before pressurising the reservoir:

- 1. BE SURE** all fluid connections to the reservoir are properly secured.
- 2.** Examine all tubing for cuts, wear, bulges and leaks. If any of these conditions exist, replace the tubing immediately with SR-TEK supplied or approved tubing. Do not try to repair a damaged tube.
- 3. BE SURE** that the fluid to be pressurised is compatible with the tubing. Contact the fluid manufacturer and confirm that the fluid is compatible with the tubing material specified on page 25 (Wetted Materials List) of this manual.
- 4. BE SURE** that the tubing will not be exposed to operating temperatures in excess of 38 °C or below 4 °C in the application.

Operating Data

Design pressure:	100psi (6.9bar)
Permissible operating pressure	100psi (6.9bar)
Test pressure:	174psi (12bar)
Safety valve set pressure	100psi (6.9bar)
Safety valve inspection number	TÜV SV.10-20557.5D/G
Maximum input pressure	100psi (6.9bar)
Minimum permissible operating temperature	4°C
Maximum permissible operating temperature	38°C
Internal Volume	1L, 2L, 5L, 10L and 25L
Usable volume*	0.85L, 2.13L, 4.25L, 11.2L and 26.5L
Material/Operating medium	Fluid Group II

* The usable volume refers to the stationary use of the pressure tank. This value does not include any reduction in volume due to internal fittings and/or the use of internal containers (e.g. jars or insert liners). Depending on the operating conditions, the usable volume must be reduced by the operator if necessary in order to avoid damage to the fittings and the internal parts (air inlet, safety devices, agitators, etc.) caused by penetration by the operating medium.

Rules and Regulations for the use of pressure tanks

The following information applies only to pressure tanks within the scope of the Pressure Equipment Directive 2014/68/EU. Material pressure tanks that fall below the limit values of Category 1 ("C0", product of pressure PS and volume V lower than 25 bar L) are not covered by the directive.

The 1L, 2L, 5L, 10L and 25L pressure tanks fall into product group II (article 9 – 2.2 of PED 2014-68-EU).

Operators must observe and comply with all safety regulations and other rules and regulations relevant for the specific application as well as for the place of use, in particular those regulations imposed by trade and industry law, transport law and water protection law. Before the pressure tank is used for the first time, it is recommended to contact an authorised inspection agency to supervise pressure equipment of the corresponding category in order to determine the rules and regulations covering the specific application and coordinate further procedures.

The pressure tank has been designed, approved and marked by the manufacturer in accordance with the EU Pressure Equipment Directive 2014/68/EU. The category in which the equipment is classified, the scope of the assessment (vessel or

assembly) and the applied conformity module can be found in the Certificate of Conformance.

All pressure equipment within the scope of the Pressure Equipment Directive is subject to surveillance in accordance with legislation governing safety of equipment and industrial safety.

Any person using equipment within the scope of the Regulations on Industrial Safety is required to perform an assessment of the dangers involved in using the equipment and to determine the measures necessary to ensure safe installation and operation of the equipment. In particular, this includes those dangers relating to the operation of the equipment itself as well as any dangers at the workplace resulting from interaction with other equipment or with materials or with the working environment.

Any person using pressure equipment is required to keep the equipment in an orderly condition, to operate the equipment in accordance with the rules and regulations, to monitor the condition of the equipment, to perform any necessary maintenance work without delay and to ensure that all the relevant safety measures relating to the specific application have been taken. If the equipment is found to have defects that might endanger its safe operation, it must be taken out of operation immediately.

Pressure equipment is subject to prescribed tests before being put into operation, including after any refitting or maintenance work have been carried out.

Inspection before first use

The pressure tank may be used for the first time only after it has been inspected by an approved inspection agency and has been judged to be in an orderly condition with regards to its assembly, installation, mounting conditions and safe operation.

Recurrent inspections

The pressure equipment must be periodically monitored by the inspection agency at specified intervals to ensure that it is in orderly condition. These inspections consist of internal inspections and strength tests.

Unless otherwise stipulated, internal inspections must be carried out by the inspection agency at least every 5 years, and strength tests must be performed at least every 10 years.

Inspection in special cases

If the pressure tank has been modified in any way, it must not be put into operation again until it has been checked by the notified body and its operation found to be fault-free, so far as it is affected by the modification(s).

If the allowable operating parameters (maximum allowable operating pressure, maximum allowable operating temperature) have been exceeded due to the specific application or as a result of external influences, or if the values have fallen below the minimum levels, the pressure tank must not be put in operation again until it has been checked by the notified body and has been found to be in a fault-free condition. This also applies if the tank has been exposed to fire.

Functional Description

In its standard design, an SR-TEK material pressure tank consists of a container with a removable lid, a compressed air inlet fitting assembly comprising of an air pressure regulator with back pressure control, a pressure gauge, a tested safety relief valve, a material outlet fitting (also on the lid) consisting of a pipe to the material outlet.

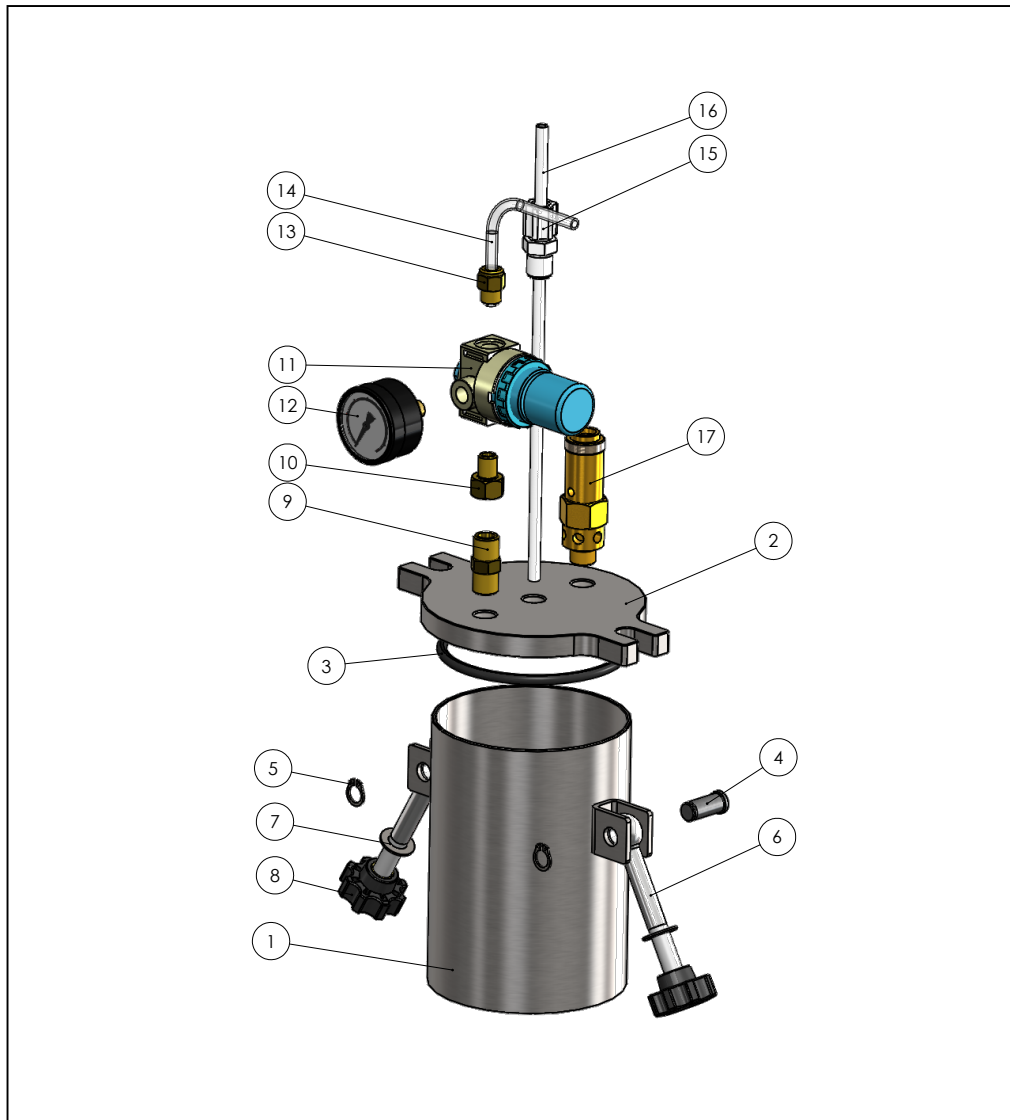
The tank operates as a feed system to the user's fluid dispensing or spraying device. SR-TEK material pressure tanks are suitable for multiple fluid applications such as dosing, spraying and mixing.

The required delivery pressure or fluid flow rate is adjusted by a pressure regulator with a back-pressure control in the air input side. Once the operating pressure has been set, the tank ensures an even flow of the fluid to the user's device.

SR-TEK material pressure tanks can also be equipped with agitators as an option. Agitators ensure constant material consistency and prevent from separation. Agitators can be fitted to tanks with a capacity as small as 1 litre and above. Air-powered agitators are available on all sizes.

Furthermore, material pressure tanks can also be equipped with precision regulators and gauges as well as a wide range of level sensors.

1000ML-ST Exploded View



1000ML-ST Specifications

Capacity:	1 litre
Maximum Operating Pressure:	6.9 bar (100 psi)
Maximum Operating Temperature:	38 °C
Minimum Operating Temperature:	4°C
Weight:	2.4 kg
Height:	225 mm
Diameter (Cover Maximum):	182 mm

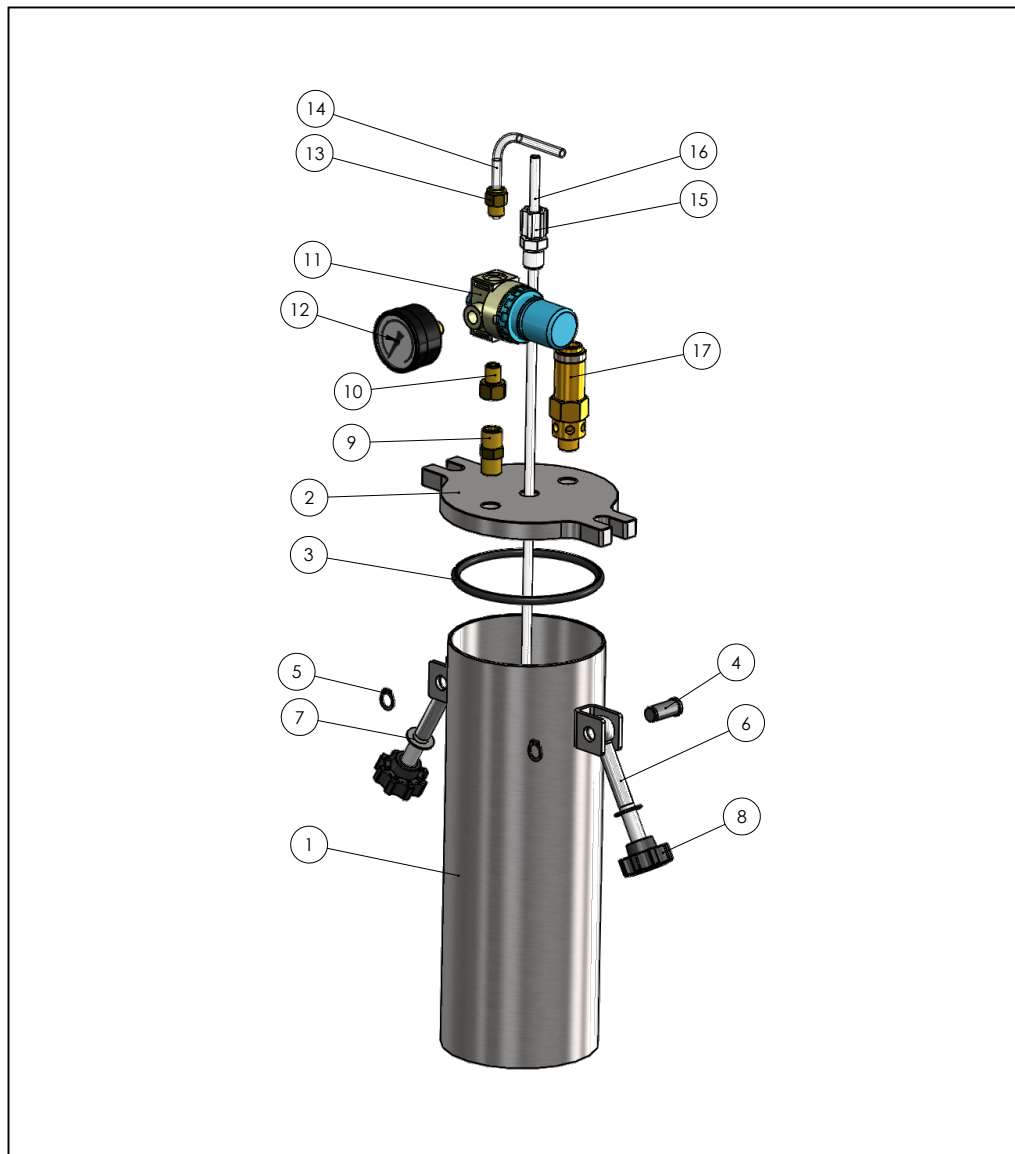
1000ML-ST Replacement Parts

Part number	Description	Quantity
1. 1011B	Reservoir Body	1
2. 1010L	Reservoir Lid	1
3. OR-4.5-90	O-Ring 90x4.5 Viton	1
4. 1015	Dowel Pin	2
5. HCIRCLIPEXT10	Circlip External D10	2
6. BM10x75SSSWING	Swing Bolt M10	2
7. WM10-19SS	Washer M10	2
8. 70800.W0033	Eight Lobed Knob M10 Plastic Brass	2
9. HNIPPLE0.25	Nipple NPT 1/4"	1
10. HADAPTERF.25-M.125	1/8 Male 1/4 Female BSP Nipple Adapter	1
11. HREGULATORAIR100	Air Pressure Regulator 0-100PSI	1
12. AN-100-G	Pressure Gauge 0-100PSI	1
13. HADAPTER0.125-6	Straight Adaptor G1/8 x 6mm	1
14. 6PE-CL	Fluid Tubing 6mm Clear	1
15. FIT-0.25-COMP-6	Compression Adapter 1/4NPT 6mm	1
16. 6PE-WH	Fluid Tubing 6mm White	1
17. 100-SV	Safety Valve 0.25 100PSI	1

Accessories

Part number	Description
1000ML-JAR	Plastic jar

2000ML-ST Exploded View



2000ML-ST Specifications

Capacity:	2 litres
Maximum Operating Pressure:	6.9 bar (100 psi)
Maximum Operating Temperature:	38 °C
Minimum Operating Temperature:	4°C
Weight:	3.1 kg
Height:	360 mm
Diameter (Cover Maximum):	182 mm

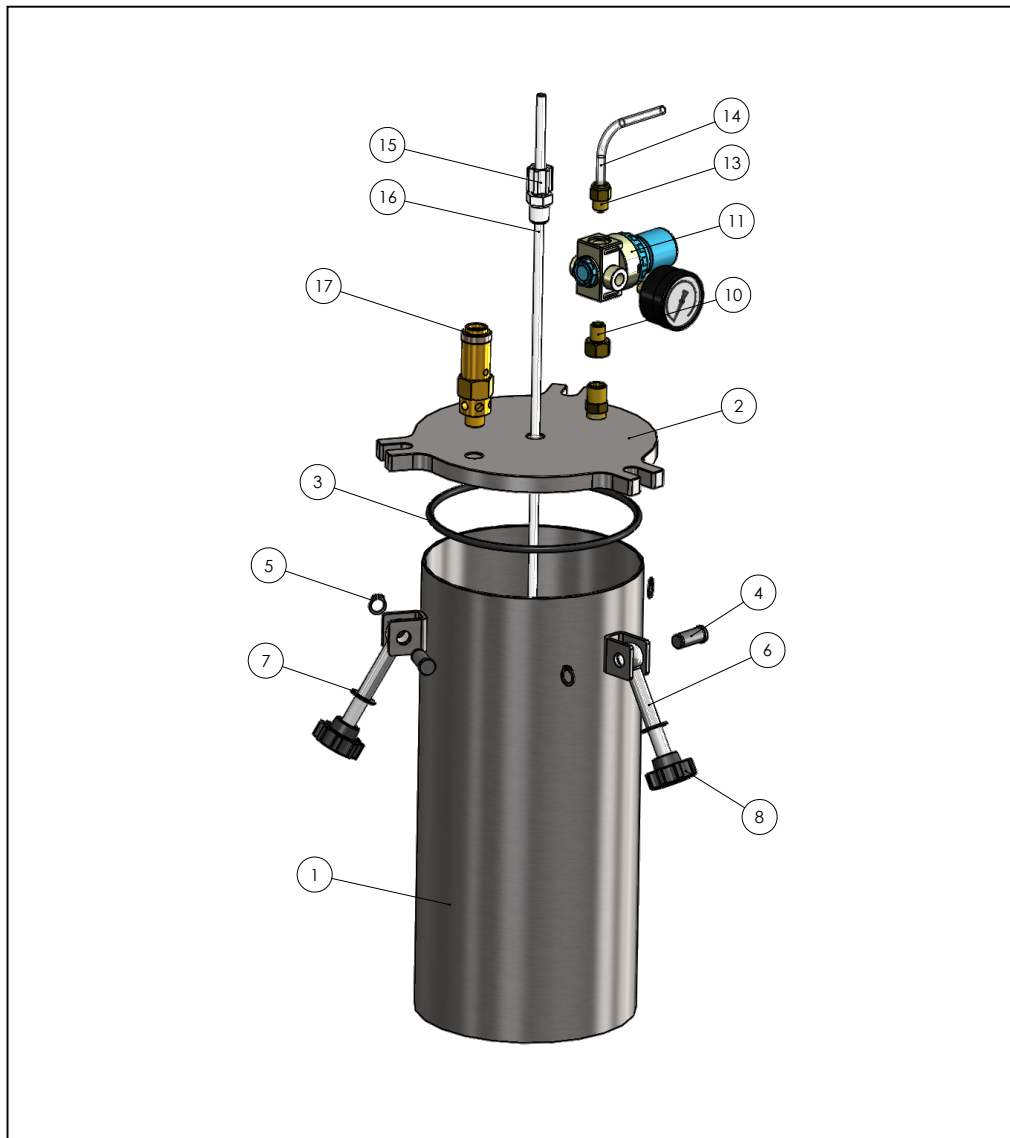
2000ML-ST Replacement Parts

Part number	Description	Quantity
1. 2011B	Reservoir Body	1
2. 1010L	Reservoir Lid	1
3. OR-4.5-90	O-Ring 90x4.5 Viton	1
4. 1015	Dowel Pin	2
5. HCIRCLIPEXT10	Circlip External D10	2
6. BM10x75SSSWING	Swing Bolt M10	2
7. WM10-19SS	Washer M10	2
8. 70800.W0033	Eight Lobed Knob M10 Plastic Brass	2
9. HNIPPLE0.25	Nipple NPT 1/4"	1
10. HADAPTERF.25-M.125	1/8 Male 1/4 Female BSP Nipple Adapter	1
11. HREGULATORAIR100	Air Pressure Regulator 0-100PSI	1
12. AN-100-G	Pressure Gauge 0-100PSI	1
13. HADAPTER0.125-6	Straight Adaptor G1/8 x 6mm	1
14. 6PE-CL	Fluid Tubing 6mm Clear	1
15. FIT-0.25-COMP-6	Compression Adapter 1/4NPT 6mm	1
16. 6PE-WH	Fluid Tubing 6mm White	1
17. 100-SV	Safety Valve 0.25 100PSI	1

Accessories

Part number	Description
2000ML-JAR	Plastic jar

5000ML-ST Exploded View



5000ML-ST Specifications

Capacity:	5 litres
Maximum Operating Pressure:	6.9 bar (100 psi)
Maximum Operating Temperature:	38 °C
Minimum Operating Temperature:	4°C
Weight:	5.7 kg
Height:	406 mm
Diameter (Cover Maximum):	202 mm

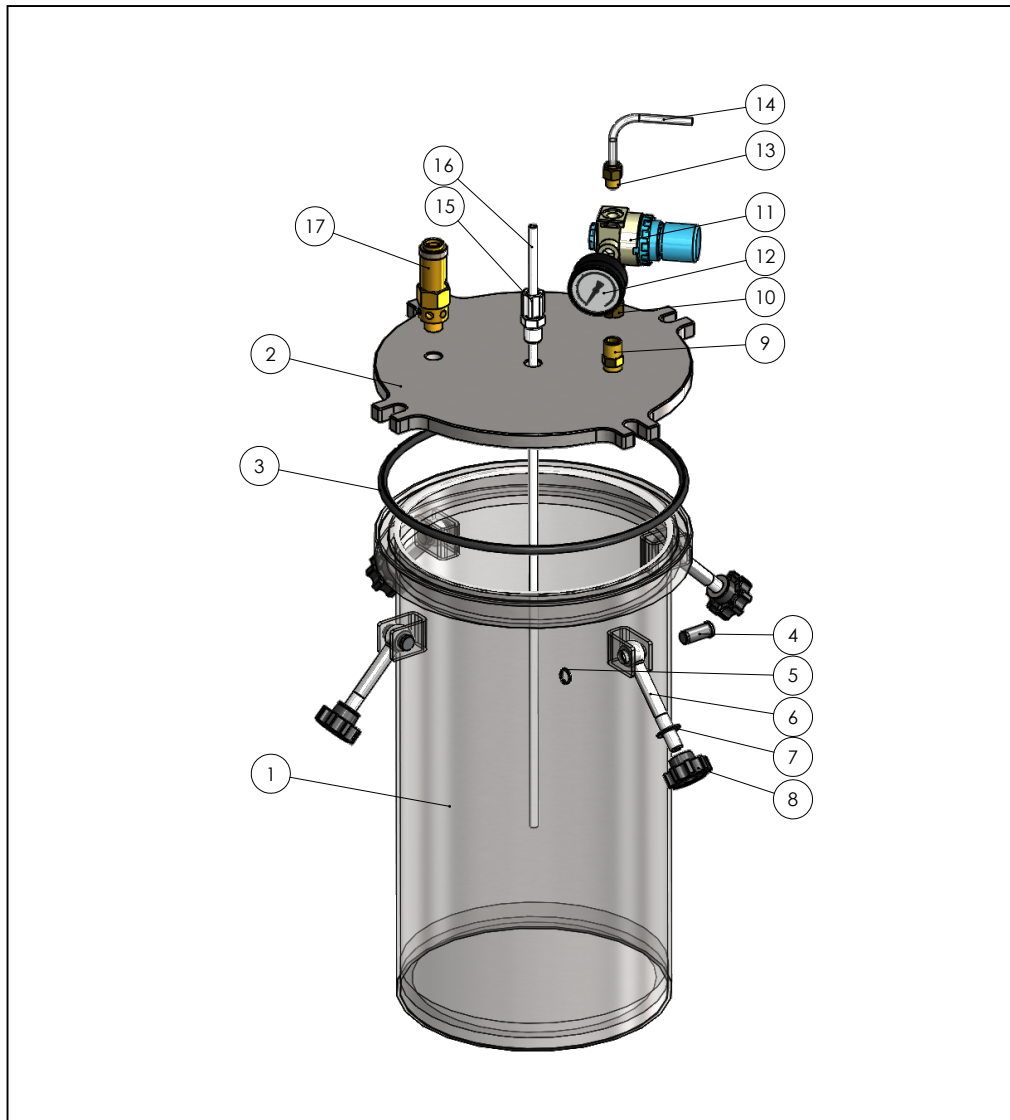
5000ML-ST Replacement Parts

Part number	Description	Quantity
1. 5011B	Reservoir Body	1
2. 5010L	Reservoir Lid	1
3. OR-4.5-140	O-Ring 140x4.5 Viton	1
4. 1015	Dowel Pin	3
5. HCIRCLIPEXT10	Circlip External D10	3
6. BM10x75SSSWING	Swing Bolt M10	3
7. WM10-19SS	Washer M10	3
8. 70800.W0033	Eight Lobed Knob M10 Plastic Brass	3
9. HNIPPLE0.25	Nipple NPT 1/4"	1
10. HADAPTERF.25-M.125	1/8 Male 1/4 Female BSP Nipple Adapter	1
11. HREGULATORAIR100	Air Pressure Regulator 0-100PSI	1
12. AN-100-G	Pressure Gauge 0-100PSI	1
13. HADAPTER0.125-6	Straight Adaptor G1/8 x 6mm	1
14. 6PE-CL	Fluid Tubing 6mm Clear	1
15. FIT-0.25-COMP-6	Compression Adapter 1/4NPT 6mm	1
16. 6PE-WH-5L	Fluid Tubing 6mm White	1
17. 100-SV	Safety Valve 0.25 100PSI	1

Accessories

Part number	Description
5000ML-JAR	Plastic jar

1000CL-ST Exploded View



1000CL-ST Specifications

Capacity:	10 litres
Maximum Operating Pressure:	6.9 bar (100 psi)
Maximum Operating Temperature:	38 °C
Minimum Operating Temperature:	4°C
Weight:	15.5 kg
Height:	484 mm
Diameter (Lid Maximum):	237 mm

1000CL-ST Replacement Parts

Part number	Description	Quantity
1. 1111B	Reservoir Body	1
2. 1110L	Reservoir Lid	1
3. OR-6-219	O-Ring Viton 6 x 219	1
4. 1015	Dowel Pin	4
5. HCIRCLIPEXT10	Circlip External D10	4
6. BM10x75SSSWING	Swing Bolt M10	4
7. WM10-19SS	Washer M10	4
8. 70800.W0033	Eight Lobed Knob M10 Plastic Brass	4
9. HNIPPLE0.25	Nipple NPT 1/4"	1
10. HADAPTERF.25-M.125	1/8 Male 1/4 Female BSP Nipple Adapter	1
11. HREGULATORAIR100	Air Pressure Regulator 0-100PSI	1
12. AN-100-G	Pressure Gauge 0-100PSI	1
13. HADAPTER0.125-6	Straight Adaptor G1/8 x 6mm	1
14. 6PE-CL	Fluid Tubing 6mm Clear	1
15. FIT-0.25-COMP-6	Compression Adapter 1/4NPT 6mm	1
16. 6PE-WH-10L	Fluid Tubing 6mm White	1
17. 100-SV	Safety Valve 0.25 100PSI	1

Accessories

Part number

Description

Not applicable for this model

2500CL-ST Replacement Parts

Part number	Description	Quantity
1. 2511B	Reservoir Body	1
2. 2510L	Reservoir Lid	1
3. OR-6-293	O-Ring Viton 6 x 293	1
4. 1015	Dowel Pin	6
5. HCIRCLIPEXT10	Circlip External D10	6
6. BM10x75SSSWING	Swing Bolt M10	6
7. WM10-19SS	Washer M10	6
8. 70800.W0033	Eight Lobed Knob M10 Plastic Brass	6
9. HNIPPLE0.25	Nipple NPT 1/4"	1
10. HADAPTERF.25-M.125	1/8 Male 1/4 Female BSP Nipple Adapter	1
11. HREGULATORAIR100	Air Pressure Regulator 0-100PSI	1
12. AN-100-G	Pressure Gauge 0-100PSI	1
13. HADAPTER0.125-6	Straight Adaptor G1/8 x 6mm	1
14. 6PE-CL	Fluid Tubing 6mm Clear	1
15. FIT-0.25-COMP-8	Compression Adapter 1/4OD	1
16. 6PE-WH-25L	Fluid Tubing 6mm White	1
17. 100-SV	Safety Valve 0.25 100PSI	1

Accessories

Part number

Description

Not applicable for this model

Conditions of use

Material pressure tanks are designed to be used for delivering low to medium fluids and materials that are put under pressure by a gas (compressed air and other inert gases).

The tank must be used only within the operating parameters specified in the Operating data (page 9 of this manual).

SR-TEK undertakes the responsibility for the device subject of delivery, i.e. for the pressure device and other components of the equipment supplied. Operators are obliged to observe the applicable regulations, instructions and be personally responsible for the equipment.

This implies that operators have read, understood and observed all instructions set out in this manual. SR-TEK Ltd cannot be held responsible for property damages, injuries or any other form of losses if operating and safety instructions described in this manual have not been followed.

Before filling the tank, make sure the fluid is compatible with all wetted parts of the equipment. Information about fluid compatibility can be found on page 5 of this manual and technical data sheet of the fluid manufacturer. In doubt, please contact SR-TEK for compatibility check. Follow the safety instructions provided by the fluid manufacturer during filling operation.

The pressure tank must not be operated solely with liquid pressure (e.g. filled to the top flange).



The pressure tank must not be pressurised using toxic, flammable or aggressive gases. Pressurising the tank with pure oxygen is strictly prohibited: **RISK OF EXPLOSION!**

The pressure tank must not be operated with nitrogen unless additional safety devices have been fitted.

The pressure tanks must not be used for transporting materials. Exceptions are permissible only if suitable measures have been taken by the customer to allow the tank being used at various locations within the same plant.

The pressure tank must not be used for long-term storage of materials.

The pressure tank must not be used for materials that are incompatible with the tank and all other wetted parts in the tank.

No changes or modifications should be made to the pressure tank and its components prior consulting SR-TEK.

The components and accessories fitted to the tank (safety valve, regulator, gauge, etc...) must not be changed or tampered with. The tank should be protected against dirt and contamination.

Instructions

① Read carefully this operation manual before handling the device and before putting it into operation.

This operation manual is part of the product and should be kept close to it. The product should always be used by trained operators.

Observe all the safety instructions from this manual to avoid damage to the equipment and risk to the operators and staff working in close proximity of the pressure tank.

If the tank is placed in an area with risk of electrostatic charges, the pressure tank, the air line, fluid line and all electric conductive surfaces within the working area of the tank must be earthed.

Air quality and connection conditions

We strongly recommend the use of 5µm coalescing filter to achieve clean and dry compressed air supply to the tank.

Prescribed air quality as per DIN ISO 8573-1, Quality Class 4.

We recommend using the following:

- Residual maximum dust particle size: 5µm
- Residual maximum dust concentration: 8mg/m³
- Residual maximum humidity concentration: 6g/m³

**If you have any questions,
please contact us for assistance.**

E-mail technical@sr-tek.com

Setup

1. Install the air tubing into the reservoir regulator already installed on the reservoir lid. Maximum pressure is 100 psi (6.9 bar). If no air filter regulator is available, please install one.
2. Remove the tank cover and temporarily store it by re-attaching one of the clamps. When filling or refilling the tank, use a cup (not included) to catch any excess material that drips from the feed tube.
3. Cut the fluid feed tubing to an appropriate length adding 180mm to go inside the tank. Cut one end of the feed tubing at an angle and push the tubing through the compression fitting and adjust the inside length so it sits just off the bottom of the tank. Tighten the compression nut to secure the tube.
4. Attach the other end of the fluid feed tubing to the other part of your system.
5. Fill the tank either by pouring material directly into the tank or placing a plastic SR-TEK jar or a manufacturer's bottle inside the tank.
6. Install the cover. If you are using a manufacturer's bottle, ensure the feed tube is inserted into the bottle.
7. Secure the swing bolts on the lid and tighten the eye nuts securely.
8. Adjust the tank air regulator to a pressure sufficient to pressurise the material. Typical settings are 5 to 10 psi (0.3 to 0.6 bar) for low viscosity and 40 to 80 psi or (2.8 to 5.5 bar) for high viscosity fluids.

Compatibility between the equipment described in this manual, the fluid, the usage and the application remain the responsibility of the operator. Special attention must be paid to potential risks of corrosion and abrasion forming inside the tank. If signs of corrosion or abrasion are detected, safely disconnect the equipment and remove the tank away from the working area.

If, while operating with the equipment, something unusual is noticed, immediately stop all operations involving the pressure tank and contact SR-TEK.

If the tank is not installed and connected correctly, not maintained regularly, used in a different way than its intended purpose, modified in any ways or safety instructions not followed, serious injuries to operators and staff working in close proximity can result out of it. SR-TEK cannot be held responsible for misuse of the equipment.

Pressure Relief Procedure

To reduce the risk of bodily injury, including fluid splashing into the eyes, **NEVER** attempt to open the reservoir without first performing this procedure.

1. Turn pressure to 0 on the reservoir air regulator.
2. Actuate the air relief valve. Hold the relief valve open until any hissing sounds end.
3. Confirm that the indicated gauge pressure is zero.
If the gauge reads zero, slowly release the cover clamps and remove the cover.
4. If the pressure gauge does not read zero after performing Steps 1 and 2, remove the air input hose from the air regulator and set the regulator pressure to zero. A hissing sound should be heard from the regulator during this step. Once the gauge reads zero, return to Step 3. Do not use the reservoir until the air relief valve is replaced.

Refilling

To open the tank, follow the Pressure Relief Procedure above.
Follow setup steps 1-8 to refill.

Note: When pressurised, it is normal to hear a hissing sound coming from the regulator. This is due to the constant-bleed regulator feature.

Wetted Parts List

The following materials come in contact with the fluid during normal use:

1. Polyethylene (fluid feed tubing)
2. For all ST models: Stainless steel grade 303 and 304, option 316 (reservoir body and lid)
3. For all STAG models stainless steel grade 303 and 304, option 316 (mixing shaft and blade)
4. Optional polyethylene jar

**If you have any questions,
please contact us for assistance.**

E-mail technical@sr-tek.com

Troubleshooting

Maintenance and repair work may be carried out only on a tank which has been completely depressurised and fully disconnected from both fluid and air lines.

Trouble:	Cannot set or maintain reservoir pressure
-----------------	--

Possible Cause	Solution
----------------	----------

- | | |
|---|--|
| ➤ Cover clamps not secured | Make sure all cover clamps are secured hand-tight. |
| ➤ Leaking feed tube compression fitting | Make sure compression fitting is assembled per instructions. If leak continues after proper installation, replace with new fitting. |
| ➤ Damaged cover O-ring seal | Replace damaged O-ring seal. |
| ➤ Damaged/malfunctioning air relief valve | Replace with new air relief valve. |
| ➤ Kinked air supply line | Make sure air supply line is straight and protected from other equipment. |
| ➤ Cover seal surface dirty or damaged | Clean both the tank's flange and the lid
Do not use sharp or pointy tools.
Make sure cover sealing surface is free from debris or other contamination.
The reservoir or the lid should be replaced if there is a cut or gouge in the sealing surface deep enough to prevent the tank from achieving its set pressure. |
| ➤ Damaged/malfunctioning air regulator | Replace with new air regulator. |
| ➤ Damaged/malfunctioning Pressure gauge | Replace with new pressure gauge. |
| ➤ Air supply is fluctuating | Supply system regulator is required.
Set the regulator to the lowest plant air fluctuation. |

**If you have any questions,
please contact us for assistance.**

E-mail technical@sr-tek.com

Maintenance and Cleaning

The ST series reservoirs are very simple and reliable reservoirs that require little routine maintenance. However, the following items should be checked monthly to assure continued trouble-free operation:

1. The air relief valve must be cycled with the reservoir pressurised at least once per month. The valve should operate smoothly with normal finger pressure. If the valve requires excessive force to operate or is visibly contaminated, it must be replaced.
2. The condition of the O-ring should be checked for cuts, tears, etc. Any spills on the sealing surface of the reservoir should be wiped clean immediately with a soft, damp cloth and mild soapy water.
3. The pressure regulator should be checked at regular intervals to ensure that it is fully functional.

If further cleaning is required, please follow the safety instruction below.

Make sure the tank has been completely depressurised and discounted from both airline and fluid line.

If cleaning agents are being used on the tank, observe the manufacturer's safety instruction, especially for aggressive and corrosive cleaning agents.

Always wear proper protective clothing and breathing protection when carrying out cleaning work with chemicals.

During cleaning, ensure that material residues do not react and are not ignited by the tools and cleaning agents used.

The use of highly flammable materials means that there is an increased risk of explosion and fire in the working area.

For cleaning the tank, use only cleaning agents which **DO NOT** contain the following components: halogenated hydrocarbons (such as trichloroethane, methylene chloride, etc...) acids, and acidic cleaning agents, regenerated solvents (so-called cleaning solvents) or paint removers. These components cause chemical reactions and can result in corrosion damage.

Do not use hard or sharp objects to clean the tank to avoid scratching the surface.

Never immerse the complete tank in solvent or any other cleaning agent as the chemicals will damage the components mounted on the lid and temper their safety function. The tank will no longer be guaranteed.

Do not use cleaning methods which could cause corrosion or which reduce the thickness of the walls (e.g mechanical sanding or sand blasting).

Waste materials produced as a result of cleaning and maintenance work must be properly disposed of in accordance with the existing laws and regulations.

Maintenance and repair work may be carried out only on a tank which has been completely depressurised and fully disconnected from both fluid and air lines.

The use of compressed air and regular maintenance will ensure that serious faults will hardly ever occur.

All regulating and safety components must, if they have been supplied by SR-TEK, be replaced only by original SR-TEK parts. List of replacement parts can be found on page 13, 15, 17, 19 and 21. Wearing parts are marked in Bold.

Please contact us if you require replacement parts.

Disposal

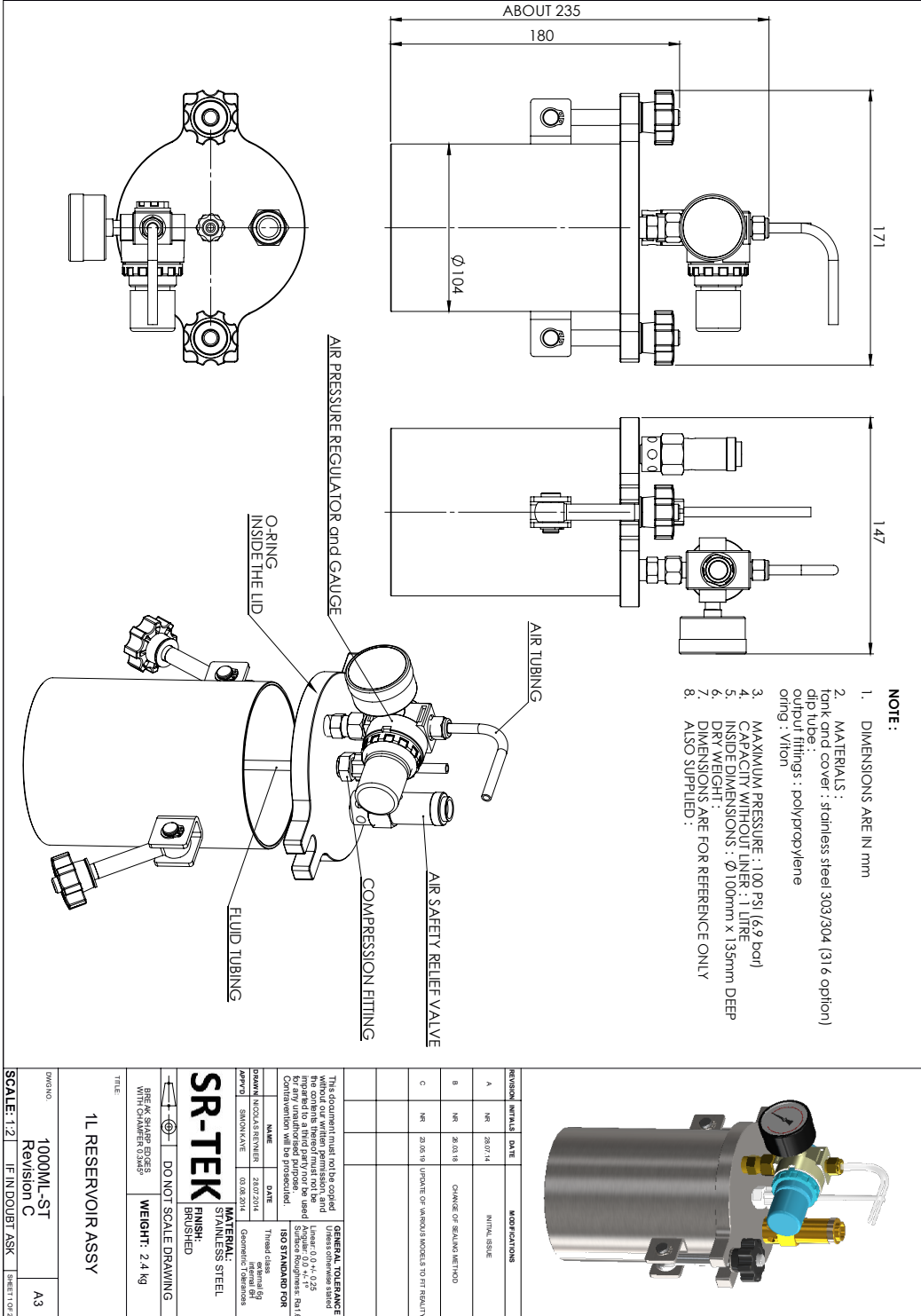
Materials that remain after cleaning and maintenance must be disposed in compliance with the laws and regulations in place in the country where the equipment is being used. Materials, fluids, cleaning agent improperly disposed endangers the environment and health of beings.

**If you have any questions,
please contact us for assistance.**

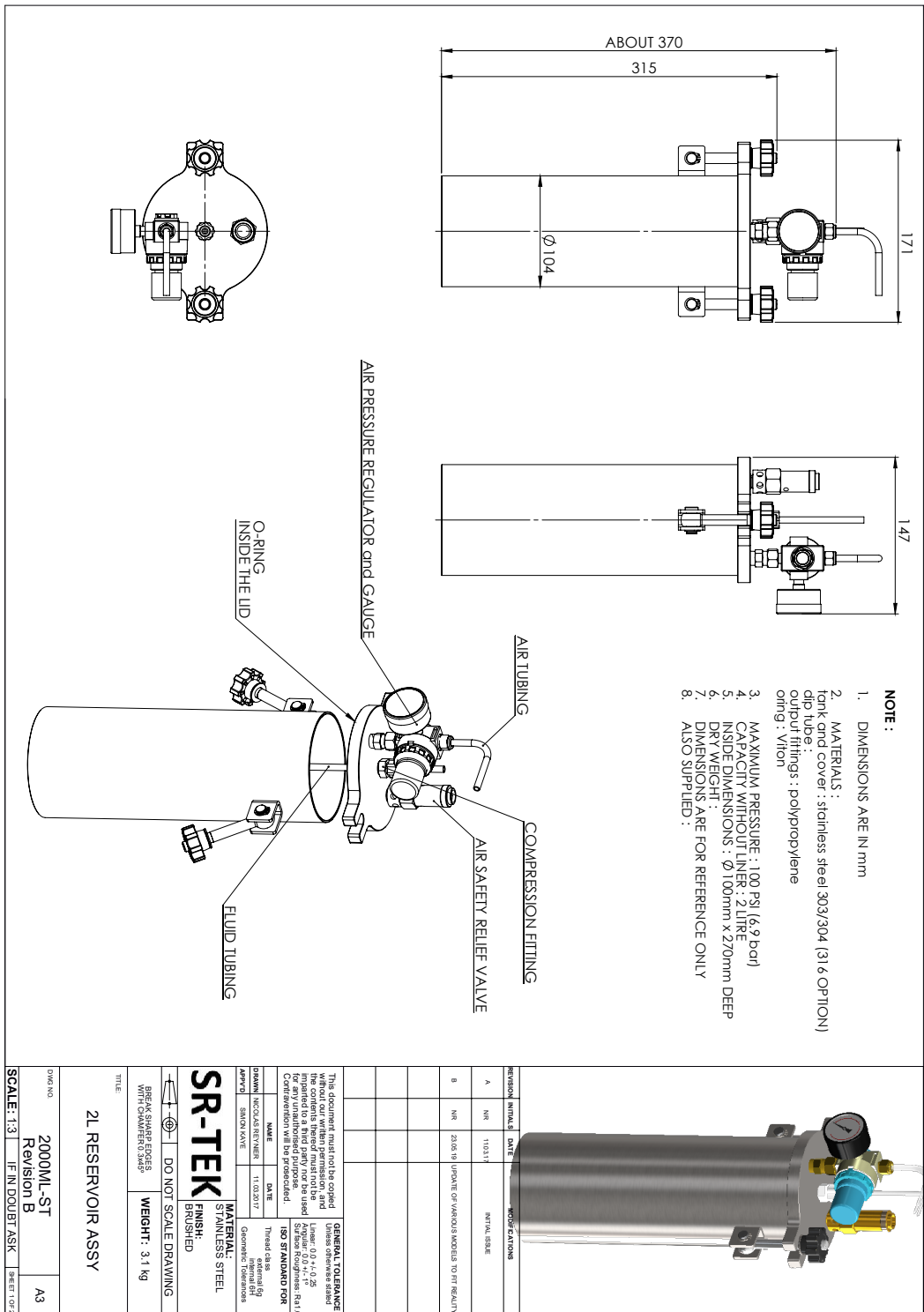
E-mail technical@sr-tek.com

Drawings

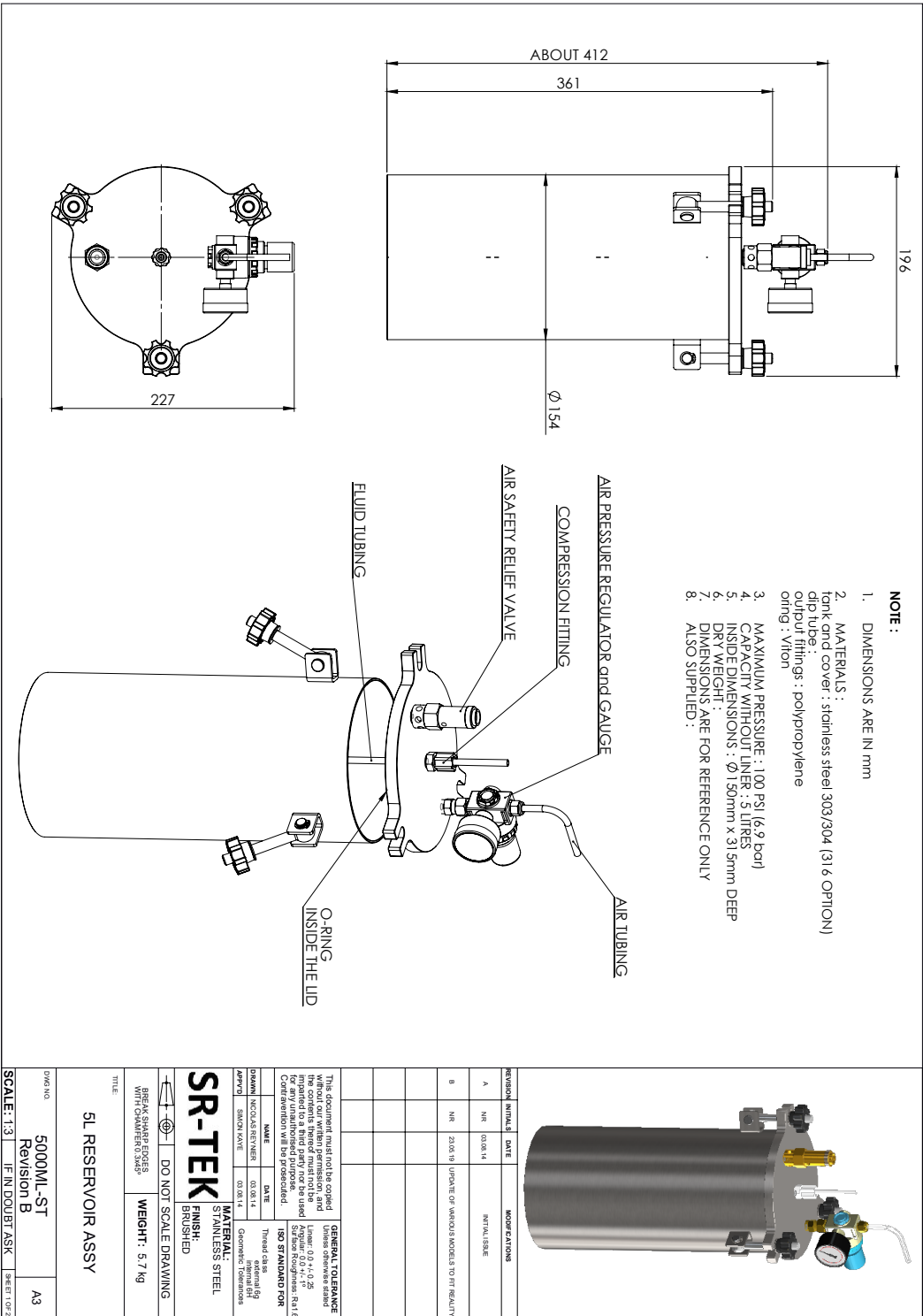
1000ML-ST

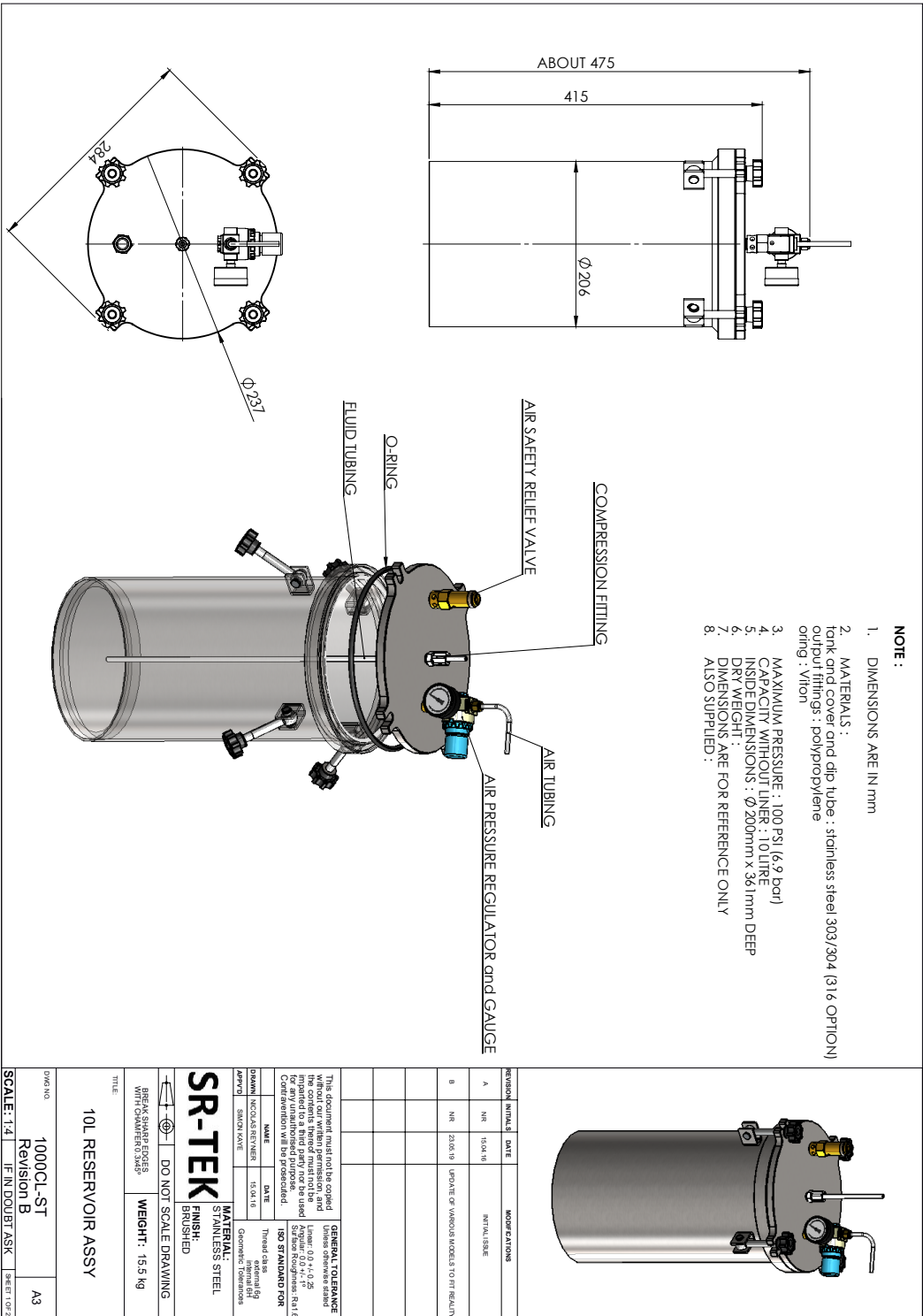


2000ML-ST



5000ML-ST





Warranty

It is the customer's duty to inspect the goods immediately after delivery. In the event of damage or defect, to raise any complaints in writing to SR-TEK. Complaints must be made within a period of 2 working days after receipt of goods.

The above also applies to excess or shortage of delivery.

SR-TEK does not accept any liability for damages or loss resulting of misuse, improper installation or operation by the customer or by third parties, normal wear and tear, incorrect or careless usage, the use of unsuitable fluids, substitute materials, defective construction work and unsuitable construction locations or from chemical, electrochemical or electrical influences, unless they are the result of our negligence.

In the event of a warranty claim, we are entitled to choose whether to repair the defect at our own expense or to provide a replacement within a reasonable period of time. If we are not prepared or able to replace or repair, or if a delay occurs for any reasons, the customer is entitled to request a partial or full refund.

The warranty period is six months.

We do not accept liability for any damage other than the delivery item itself.

In the event that liability has not been excluded, our liability to provide compensation is limited to the foreseeable damage; this does not apply if the cause of the damage is the result of wilful action.

In the case of second hand goods, we will accept liability only if these have been overhauled by us and brought to a technical state which approaches the technical state of new goods in accordance with the justified expectation of the customer.

The warranty period on second hand goods is three months.