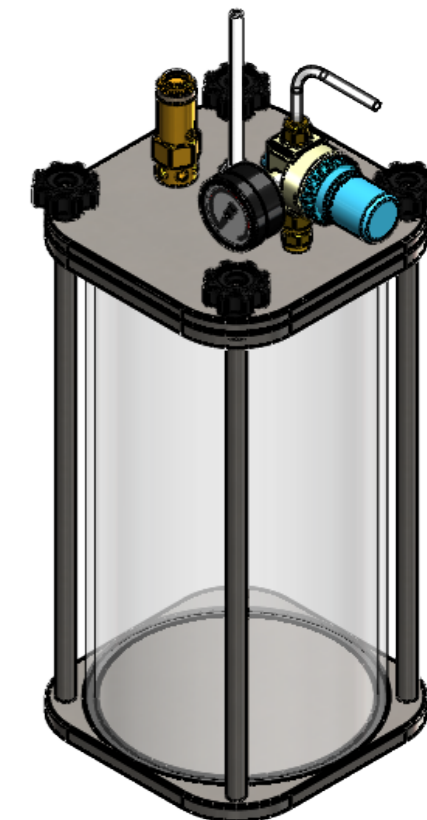
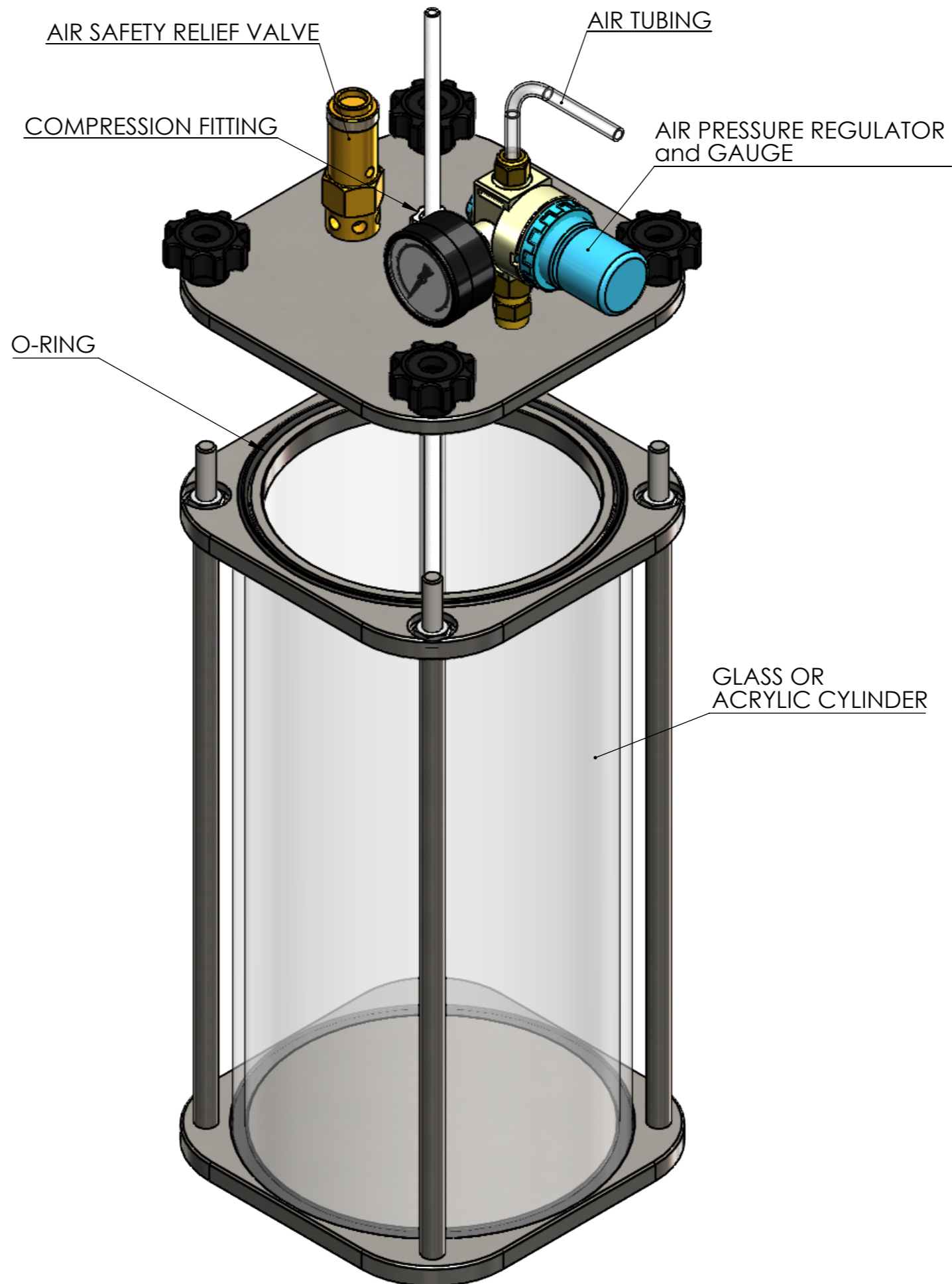
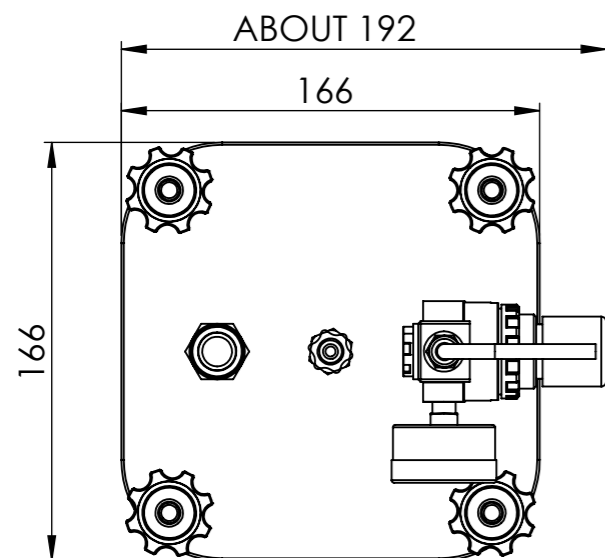
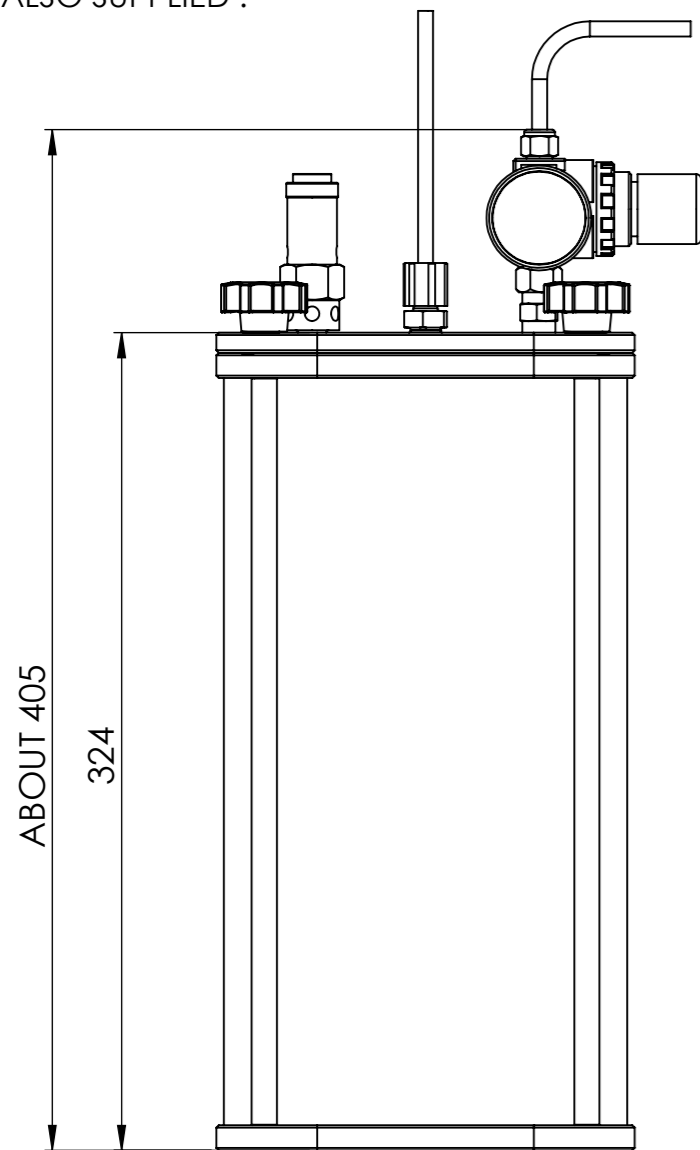


NOTE :

1. DIMENSIONS ARE IN mm
2. MATERIALS :
 tank : glass or acrylic
 structure : stainless steel 303/304 (316 option)
 output fittings : polypropylene oring : Viton
 output fittings : polypropylene oring : Viton
3. MAXIMUM PRESSURE : 60 PSI (4 bar)
4. CAPACITY WITHOUT LINER : 5 LITRE
5. INSIDE DIMENSIONS : ϕ 150mm x 300mm DEEP
6. DIMENSIONS ARE FOR REFERENCE ONLY
7. ALSO SUPPLIED :



REVISION	INITIALS	DATE	MODIFICATIONS
A	NR	07.11.17	INITIAL ISSUE
B	NR	26.05.19	UPDATE OF VARIOUS MODELS TO FIT REALITY

This document must not be copied without our written permission, and the contents thereof must not be imparted to a third party nor be used for any unauthorised purpose. Contravention will be prosecuted.	GENERAL TOLERANCE Unless otherwise stated Linear: 0.0 +/- 0.25 Angular: 0.0 +/- 1° Surface Roughness: Ra1.6	
	ISO STANDARD FOR Thread class external 6g internal 6H Geometric Tolerances	
DRAWN NICOLAS REYNIER APP'VD SIMON KAYE	DATE 07.11.2017	NAME DATE

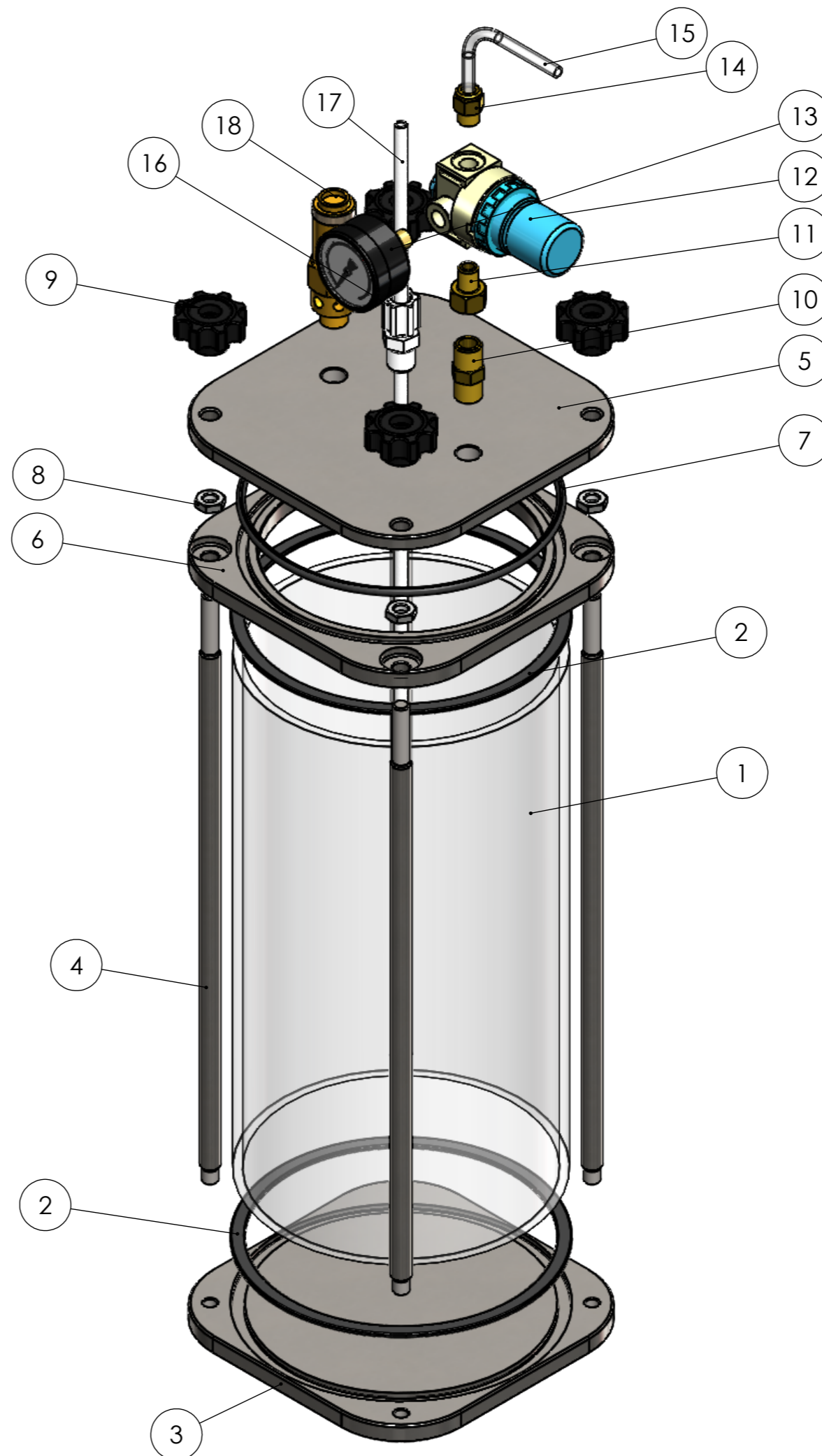
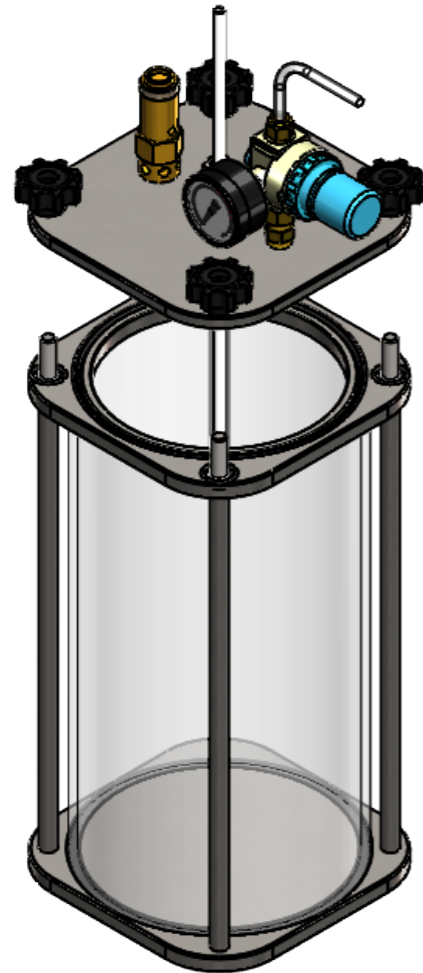
SR-TEK MATERIAL: STAINLESS STEEL
 GLASS / ACRYLIC
 FINISH: BRUSHED

DO NOT SCALE DRAWING
 BREAK SHARP EDGES WITH CHAMFER 0.3x45° **WEIGHT: 3.2 kg**

TITLE:
5L CLEAR TANK

DWG NO. **5000ML-CT Revision B** A3
SCALE: 1:3 IF IN DOUBT ASK SHEET 1 OF 2

#	PART NUMBER	DESCRIPTION	QTY
1	5025	GLASS OR ACRYLIC CYLINDER 5L	1
2	2009	VITON FLAT SEAL	2
3	2010	BASE PLATE	1
4	5026	ROD	4
5	2019	LID	1
6	2020	TOP PLATE	1
7	OR-4-148	ORING VITON 148x4	1
8	NM8SS	NUT STAINLESS STEEL M8	4
9	NM8PLSTAR	STAR GRIP NUT M8	4
10	HNIPPLE0.25	NIPPLE NPT 1/4"	1
11	HADAPTERF.25-M.125	1/8 MALE 1/4 FEMALE BSP NIPPLE ADAPTER	1
12	HREGULATORAIR60	AIR PRESSURE REGULATOR 0-60 PSI	1
13	AN-60-G	PRESSURE GAUGE 0-60 PSI	1
14	HADAPTER0.125-6	STRAIGHT ADAPTOR G1/8 x 6mm	1
15	6PE-CL	FLUID TUBING 6mm CLEAR	1
16	FIT-0.25-COMP-6	COMPRESSION ADAPTER 1/4NPT 6mm	1
17	6PE-WH-5L	CLEAR TUBING DIAM6	1
18	60-SV	SAFETY VALVE 0.25 60PSI	1



REVISION	INITIALS	DATE	MODIFICATIONS
A	NR	07.11.17	INITIAL ISSUE
B	NR	26.05.19	UPDATE OF VARIOUS MODELS TO FIT REALITY

This document must not be copied without our written permission, and the contents thereof must not be imparted to a third party nor be used for any unauthorised purpose. Contravention will be prosecuted.		GENERAL TOLERANCE Unless otherwise stated Linear: 0.0 +/- 0.25 Angular: 0.0 +/- 1° Surface Roughness: Ra1.6						
ISO STANDARD FOR Thread class external 6g internal 6H Geometric Tolerances		<table border="1"> <thead> <tr> <th>NAME</th> <th>DATE</th> </tr> </thead> <tbody> <tr> <td>DRAWN NICOLAS REYNIER</td> <td>07.11.2017</td> </tr> <tr> <td>APPV'D SIMON KAYE</td> <td> </td> </tr> </tbody> </table>	NAME	DATE	DRAWN NICOLAS REYNIER	07.11.2017	APPV'D SIMON KAYE	
NAME	DATE							
DRAWN NICOLAS REYNIER	07.11.2017							
APPV'D SIMON KAYE								

SR-TEK MATERIAL: STAINLESS STEEL
GLASS / ACRYLIC
FINISH: BRUSHED

DO NOT SCALE DRAWING
 BREAK SHARP EDGES WITH CHAMFER 0.3x45° WEIGHT: 3.2 Kg

TITLE:
5L CLEAR TANK

DWG NO. **5000ML-CT** Revision B A3

SCALE: 1:2 IF IN DOUBT ASK SHEET 2 OF 2